

Piping Connections for Electric Fire Pump Controllers

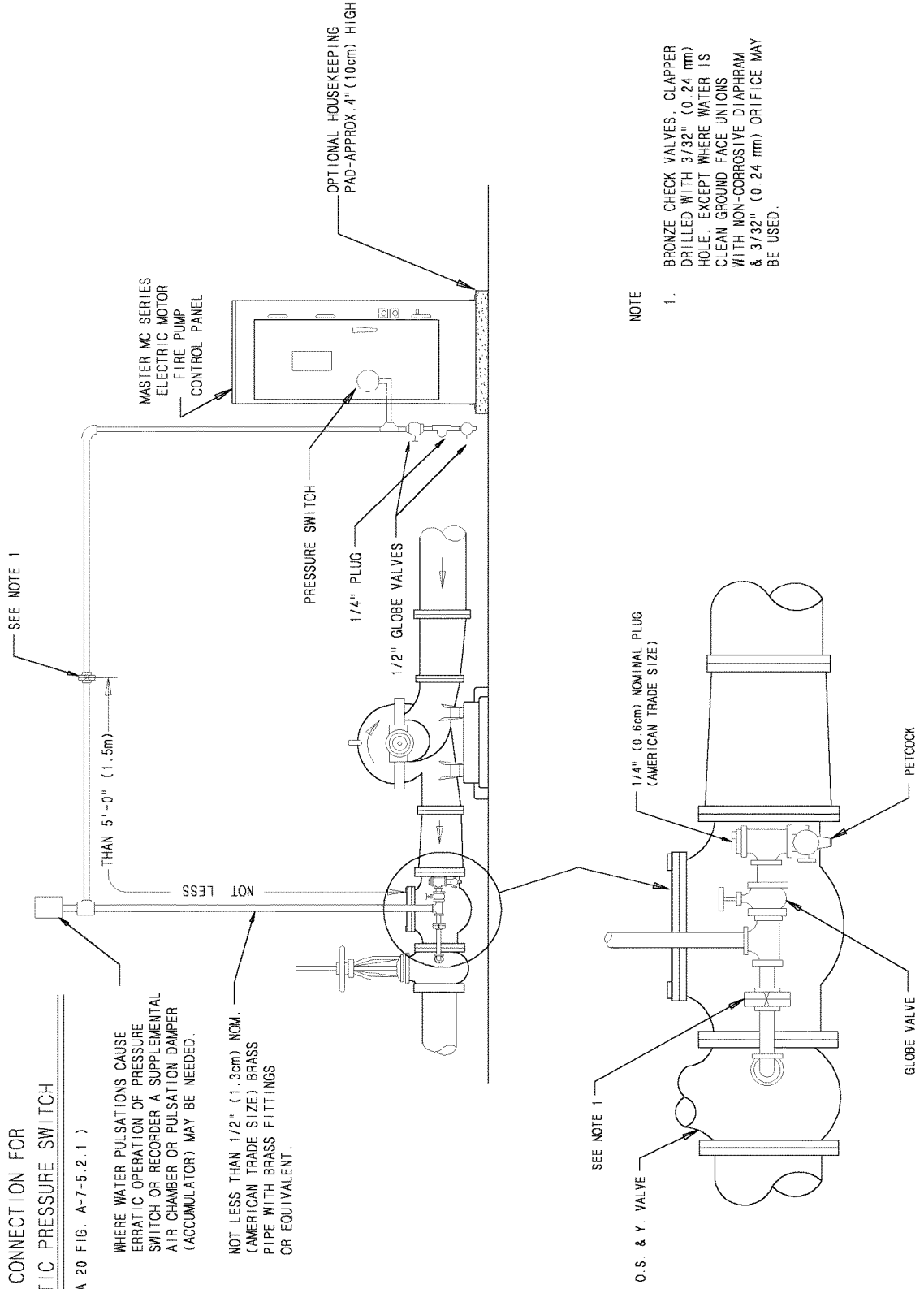
MASTER

PIPING CONNECTION FOR AUTOMATIC PRESSURE SWITCH

(PER NFPA 20 FIG. A-7-5.2.1)

WHERE WATER PULSATIONS CAUSE
ERRATIC OPERATION OF PRESSURE
SWITCH OR RECORDER A SUPPLEMENTAL
AIR CHAMBER OR PULSATION DAMPER
(ACCUMULATOR) MAY BE NEEDED.

NOT LESS THAN 1/2" (1.3cm) NOM.
(AMERICAN TRADE SIZE) BRASS
PIPE WITH BRASS FITTINGS
OR EQUIVALENT.



Master Control Systems Inc.
LAKE BLUFF, ILLINOIS U.S.A.

Piping Connections for Electric Controllers

Date 25 September 2002
Drawing 16786
Issue 1