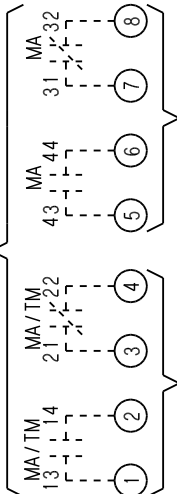


Model JPC Pump Motor Controller

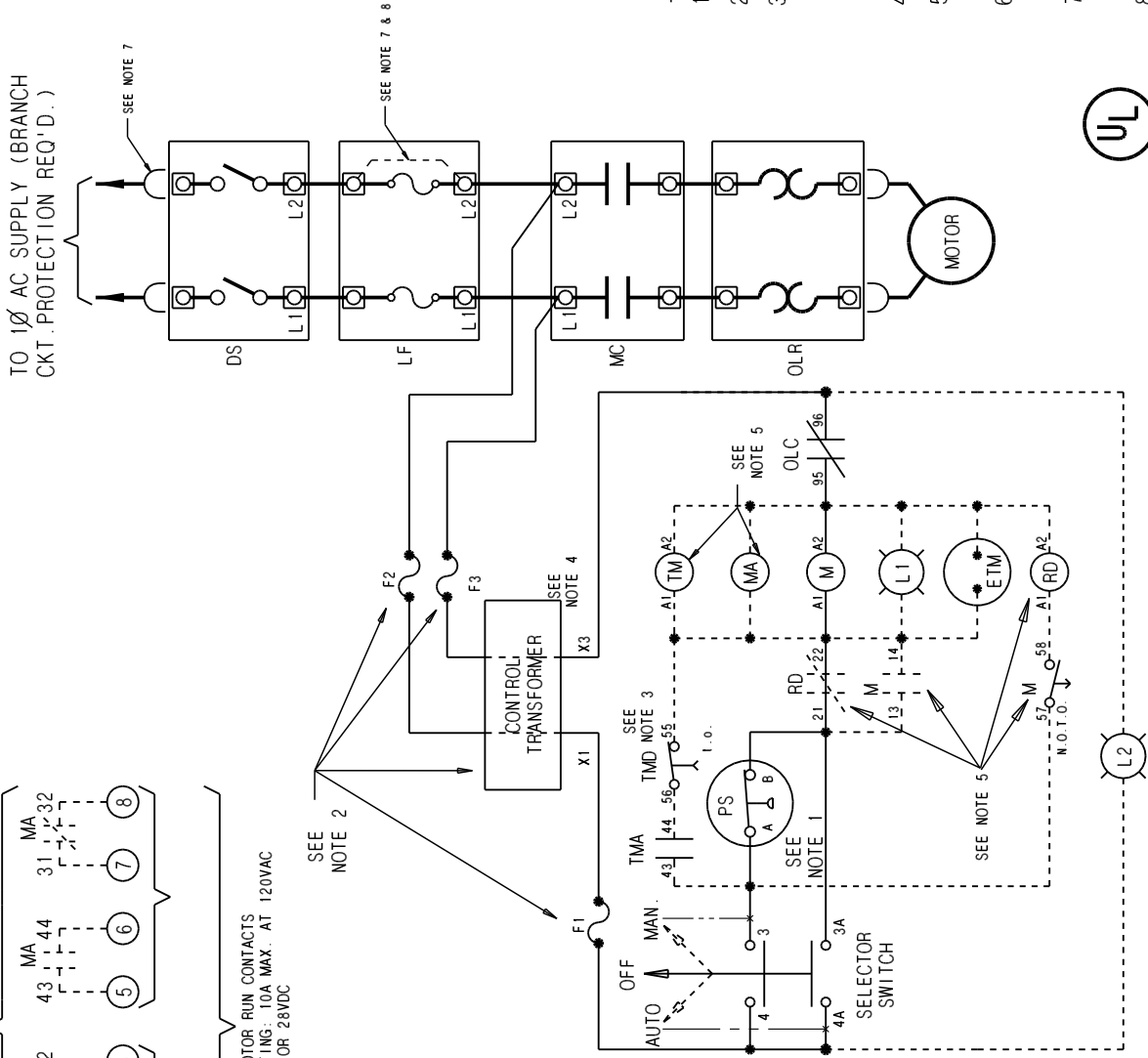
MASTER

OPTION A2



OPTION A1

AUX. MOTOR RUN CONTACTS
CONTACT RATING: 10A MAX. AT 120VAC
OR 28VDC



SYMBOL

- DS DISCONNECT SWITCH
 - LF LINE FUSES
 - MC MOTOR CONTACTOR CONTACTS
 - OLR OVERLOAD RELAY
 - PS PRESSURE SWITCH
 - M MOTOR CONTACTOR COIL
 - MA AUX. MOTOR RUN RELAY
 - TM MINIMUM RUN TIMER
 - RD RESTART DELAY
 - OLC OVERLOAD CONTACTS
 - TMA MIN. RUN TIMER INST. CONTACT
 - TMD MIN. RUN TIMER TIME CONTACT
 - F1 SECONDARY CONTROL CKT. FUSE
 - F2,3 PRIMARY CONTROL CKT. FUSE
 - L1 POWER RUNNING LIGHT
 - L2 POWER AVAILABLE LIGHT
 - ETM ELAPSED TIME METER
- OPTIONAL EQUIPMENT
FIELD WIRING

DESCRIPTION

NOTES:

1. PRESSURE SWITCH CLOSURES ON FALLING PRESSURE.
2. SUPPLIED WITH OPT. 1-CONTROL POWER XFMR.
3. SUPPLIED WITH OPT. 2-MINIMUM RUN TIMER CONTACT OPENS WHEN TIMER TIMES OUT. SET TIMER TO 1 MIN. FOR EACH 10 HP OR FRACTION THEREOF. MAX. SETTING-3 MIN. (180 SEC.)
4. FOR XFMR. PRIMARY, SEE LABEL ON WINDING.
5. MA SUPPLIED WITH OPTION A2 OR OPTION A1 WHEN OPTION 2 IS NOT PROVIDED.
6. RD AND ADDITIONAL M CONTACTS SUPPLIED WITH OPT. 4-RESTART DELAY(0-30 SEC.).
7. L2 LINE FUSE (LF) NOT SUPPLIED ON 115VAC OR 220VAC/50HZ. CONNECT NEUTRAL LINE TO L2.
8. JUMPER ADDED FOR 120VAC/60HZ. & 220VAC/50HZ.



LISTED



Master Control Systems Inc.
LAKE BLUFF, ILLINOIS U.S.A.

Model JPC Single Phase Controller Schematic Diagram

Date 19 October 2009
Drawing 7853
Issue 1