

# Piping Connections for Electric Fire Pump Controllers

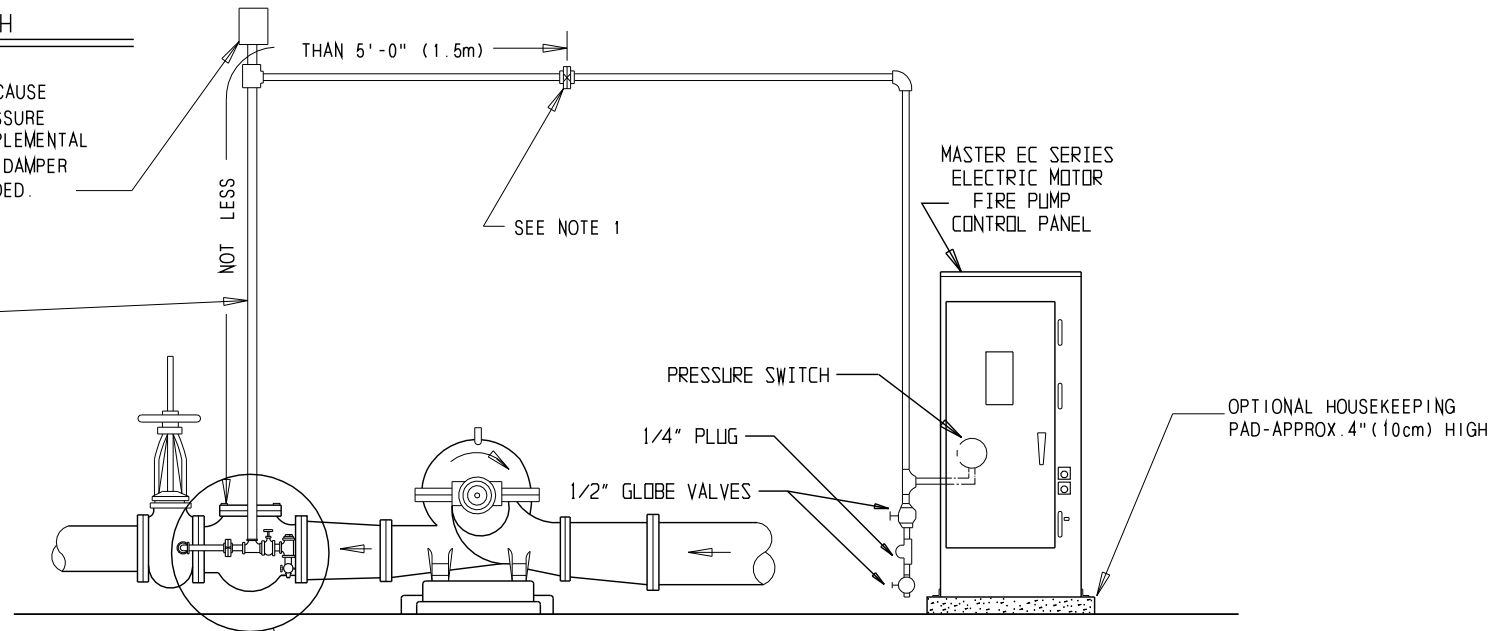
**MASTER**

( PER NFPA 20 FIG. A-75.2.1 )

## PIPING CONNECTION FOR AUTOMATIC PRESSURE SWITCH

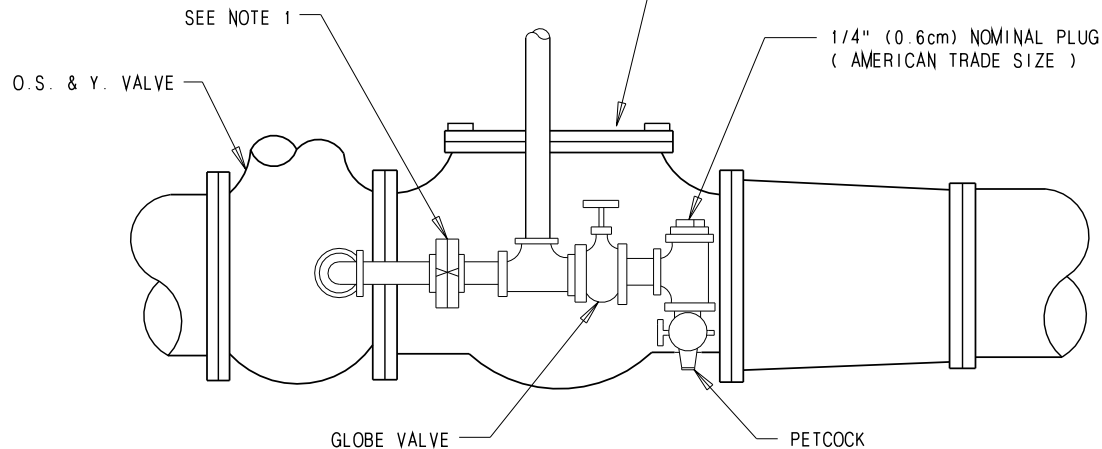
WHERE WATER PULSATIONS CAUSE  
ERRATIC OPERATION OF PRESSURE  
SWITCH OR RECORDER A SUPPLEMENTAL  
AIR CHAMBER OR PULSATION DAMPER  
(ACCUMULATOR) MAY BE NEEDED.

NOT LESS THAN 1/2" (1.3cm) NOM.  
(AMERICAN TRADE SIZE) BRASS  
PIPE WITH BRASS FITTINGS  
OR EQUIVALENT.



### NOTE

- 1 BRONZE CHECK VALVES, CLAPPER  
DRILLED WITH 3/32" (.24 mm)  
HOLE, EXCEPT WHERE WATER  
IS CLEAN GROUND FACE UNIONS WITH  
NON-CORROSIVE DIAPHRAM & 3/32"  
(.24mm) ORIFICE MAY BE USED.



**Master Control Systems Inc.**  
LAKE BLUFF, ILLINOIS U.S.A.

Piping Connections for Electric Controllers

Date 10 October 2010

Drawing WB12786 Issue 1