

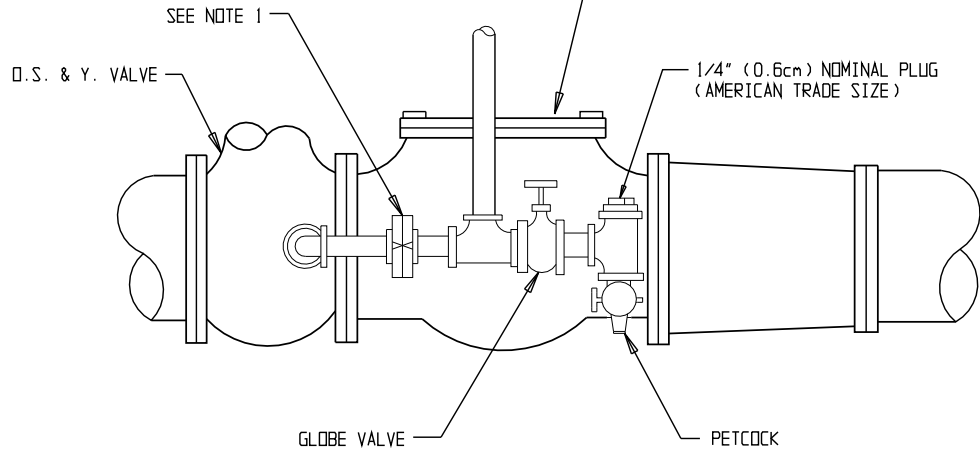
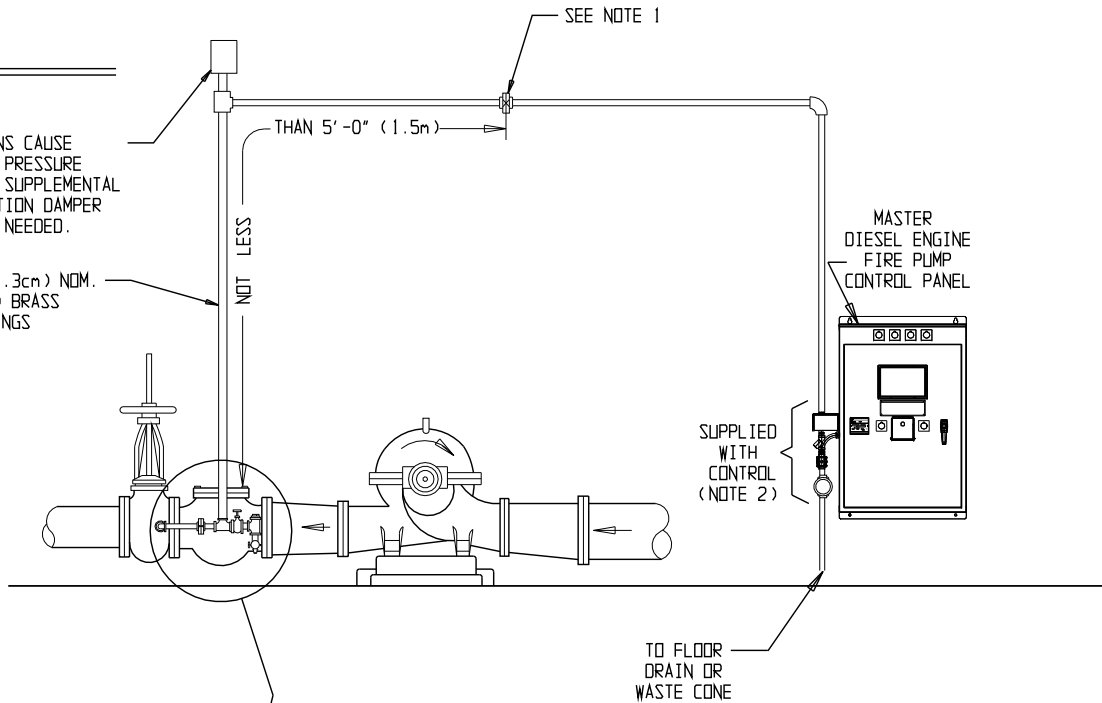
DEC Fire Pump Transfer Controller

MASTER

PIPING CONNECTION FOR
PRESSURE SENSING LINE
(PER NFPA 20 FIG. A-12-5.2.1, 1A)

WHERE WATER PULSATIONS CAUSE
ERRATIC OPERATION OF PRESSURE
SWITCH OR RECORDER A SUPPLEMENTAL
AIR CHAMBER OR PULSATION DAMPER
(ACCUMULATOR) MAY BE NEEDED.

NOT LESS THAN 1/2" (1.3cm) NOM.
(AMERICAN TRADE SIZE) BRASS
PIPE WITH BRASS FITTINGS
OR EQUIVALENT.



NOTE

1. BRONZE CHECK VALVES, CLAPPER DRILLED WITH 3/32" (.24 mm) HOLE, EXCEPT WHERE WATER IS CLEAN GROUND FACE UNIONS WITH NON-CORROSIVE DIAPHRAM & 3/32" (.24 mm) DRIFICE MAY BE USED.
2. 1/2" (1.3cm) NOMINAL AMERICAN STANDARD TAPER FEMALE PIPE THREAD INLET & OUTLET.



Master Control Systems Inc.
LAKE BLUFF, ILLINOIS U.S.A.

PIPING CONNECTION FOR DEC FIRE PUMP CONTROL

Date 10 October 2010

Drawing 17000 Issue 1