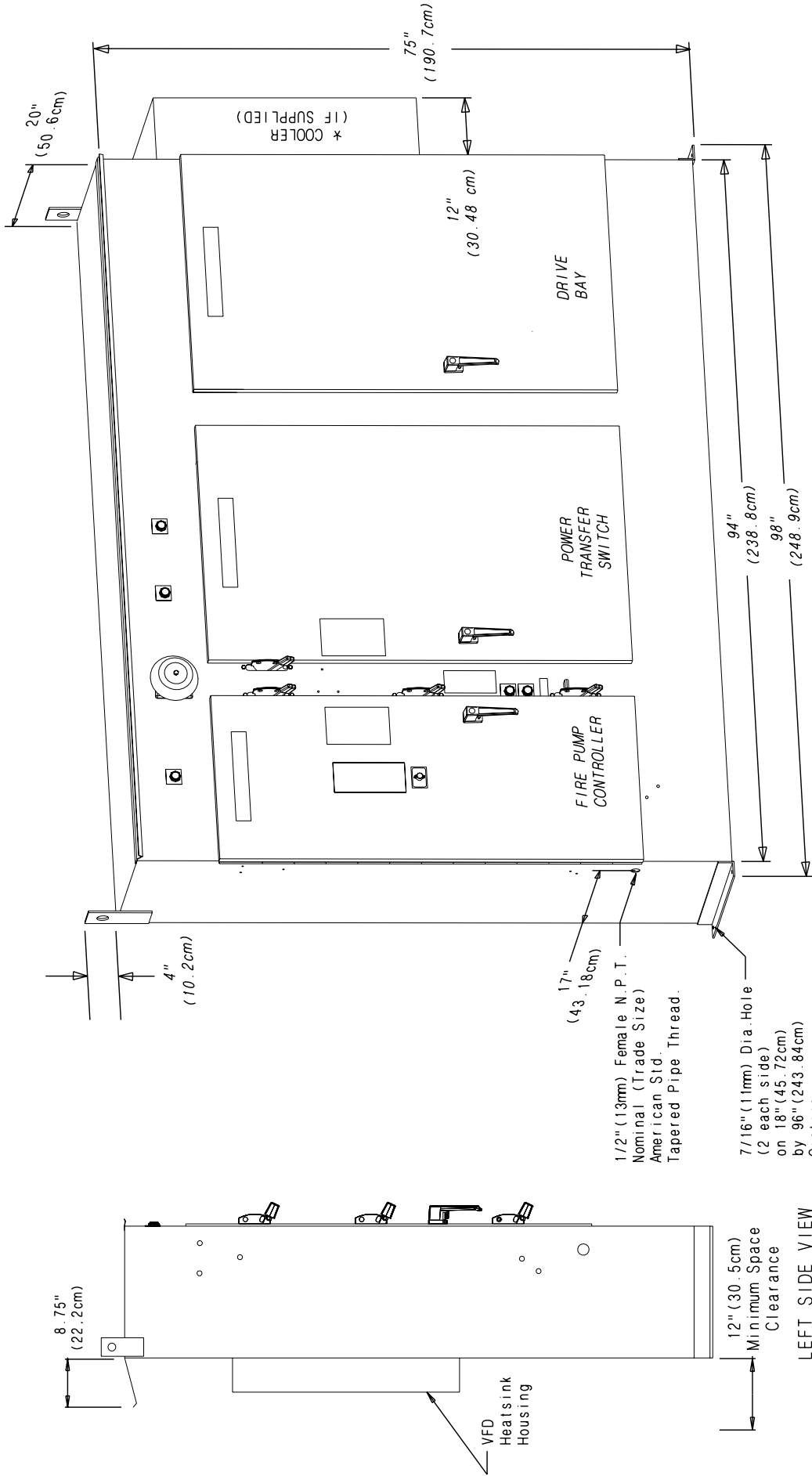


ECV Automatic Transfer Switch Fire Pump Controller

MASTER



NOTES

- Enclosure: 13 Gauge Sheet Steel
- Finish: Fire Pump Red (Baked Finish)
- Construction: Driptight, With 3 Point Latch
- Knockouts: None; Enter conduit on Top or Bottom. Protect Equipment from Drilling Chips
- Access: Front Only
- Mounting: Floor Mount
- Max. Shipping Weight: 1,750 Lbs. (794 kg)
- Maintain 36" (91.4cm) working clearance front and right side



LISTED

APPROVED