

PMCV Pump Controller

MASTER

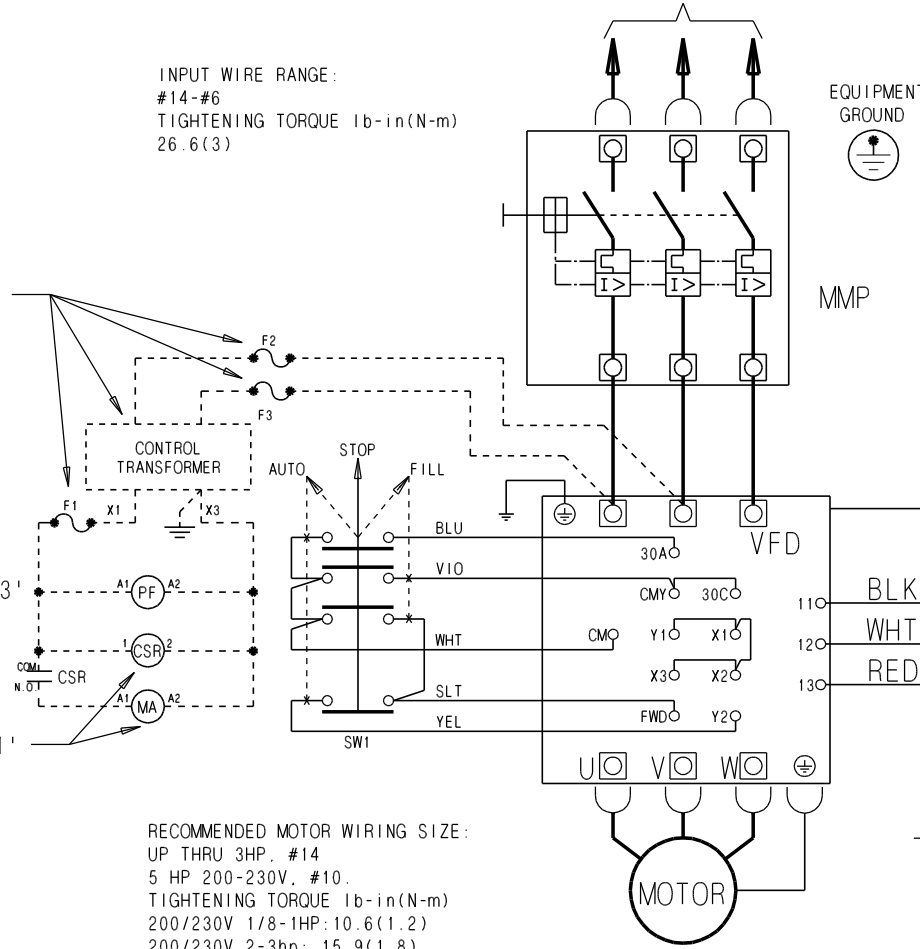
TO 3Ø AC SUPPLY (BRANCH
CKT. PROTECTION REQ'D.)

INPUT WIRE RANGE:
#14-#6
TIGHTENING TORQUE Ib-in(N-m)
26.6(3)

OPTION '1'

OPTION 'A3'

OPTION 'A1'



RECOMMENDED MOTOR WIRING SIZE:
UP THRU 3HP, #14
5 HP 200-230V, #10.
TIGHTENING TORQUE Ib-in(N-m)
200/230V 1/8-1HP: 10.6(1.2)
200/230V 2-3hp: 15.9(1.8)
460V 1/2-3HP: 15.9(1.8)

SYMBOL

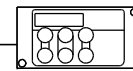
- DS
- VFD
- MMP
- MA
- PF
- CSR

DESCRIPTION

- DISCONNECT SWITCH
- VARIABLE SPEED DRIVE
- MANUAL MOTOR PROTECTOR
- MOTOR RUN RELAY
- POWER FAIL RELAY
- CURRENT SENSE RELAY

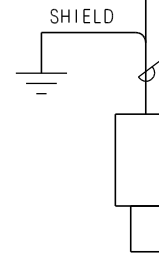


FIELD WIRING

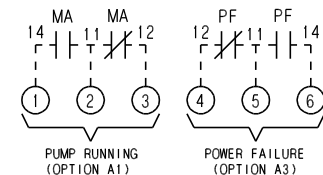


KEYPAD
(THRU DOOR)
KEYPAD MANUAL
RUN/STOP DISABLED
USE MODE SWITCH(SW1)

SHIELDED
CABLE



TRANSDUCER



Listed