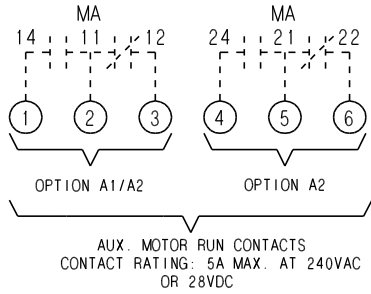
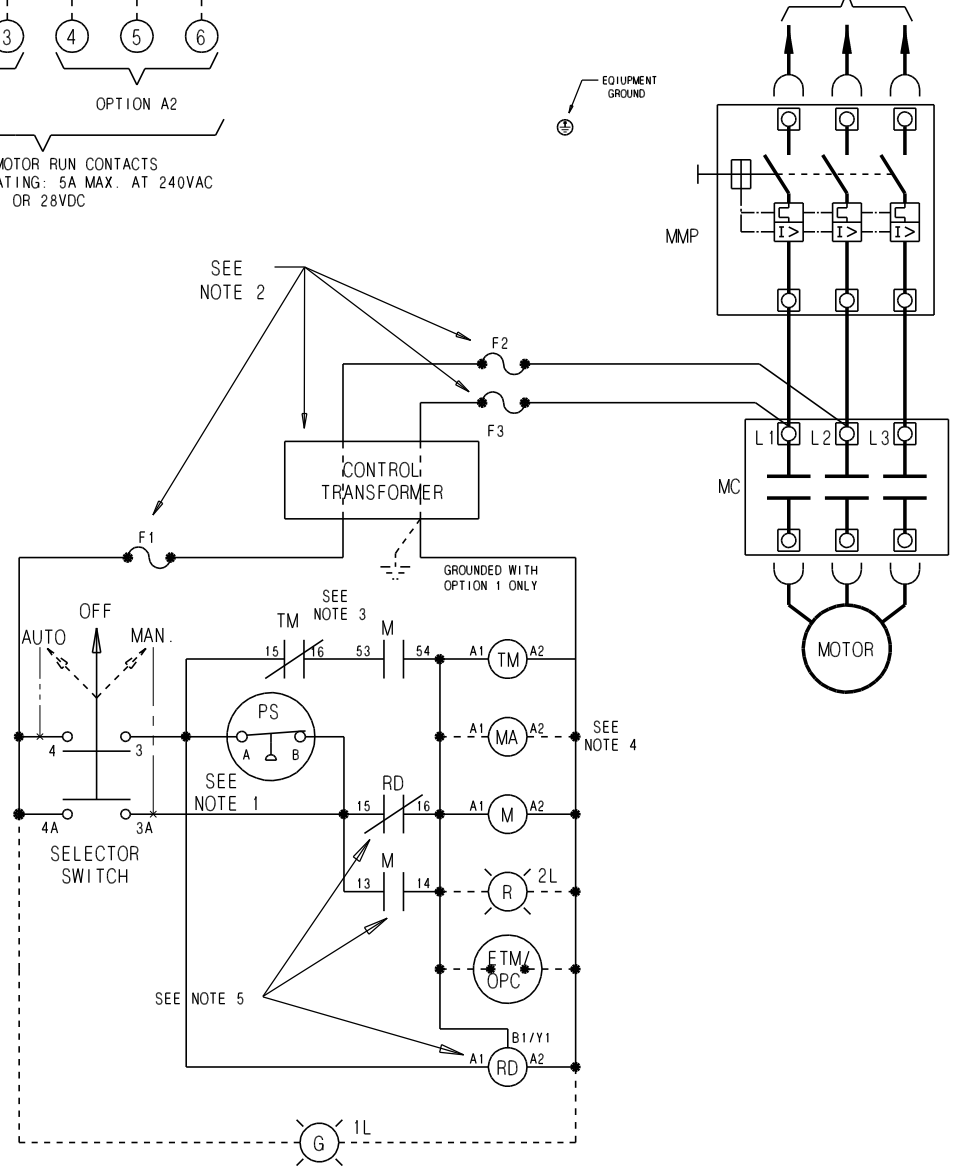


# Model JPC Pump Motor Controller

**MASTER**



TO 3Ø AC SUPPLY (BRANCH  
CKT. PROTECTION REQ'D  
PER NEC 430.52)



SYMBOL	DESCRIPTION
MMP	MANUAL MOTOR PROTECTOR
MC	MOTOR CONTACTOR CONTACTS
PS	PRESSURE SWITCH
M	MOTOR CONTACTOR COIL
MA	AUX. MOTOR RUN RELAY
TM	MINIMUM RUN TIMER
RD	RESTART DELAY
TM	MIN. RUN TIMER
F1	SECONDARY CONTROL CKT. FUSE
F2,3	PRIMARY CONTROL CKT. FUSE
1L	POWER ON LAMP (OPTION L2)
2L	PUMP RUNNING LAMP (OPTION L1)
ETM/ OPC	ELAPSED TIME METER -OR- OPERATIONS COUNTER
---	OPTIONAL EQUIPMENT
⌋	FIELD WIRING

**NOTES:**

1. PRESSURE SWITCH CLOSES ON FALLING PRESSURE.
2. SUPPLIED WITH OPT 1 - CONTROL TRANSFORMER. SEE TRANSFORMER LABEL FOR WIRING.
3. SUPPLIED WITH OPT 2 - MINIMUM RUN TIMER CONTACT OPENS WHEN TIMER TIMES OUT. SET TIMER TO 1 MIN. FOR EACH 10 HP OR FRACTION THEREOF. MAX. SETTING OF 3 MINUTES.
4. MA SUPPLIED WITH OPT A1 OR A2.
5. SUPPLIED WITH OPT 4 - RESTART DELAY.



LISTED