

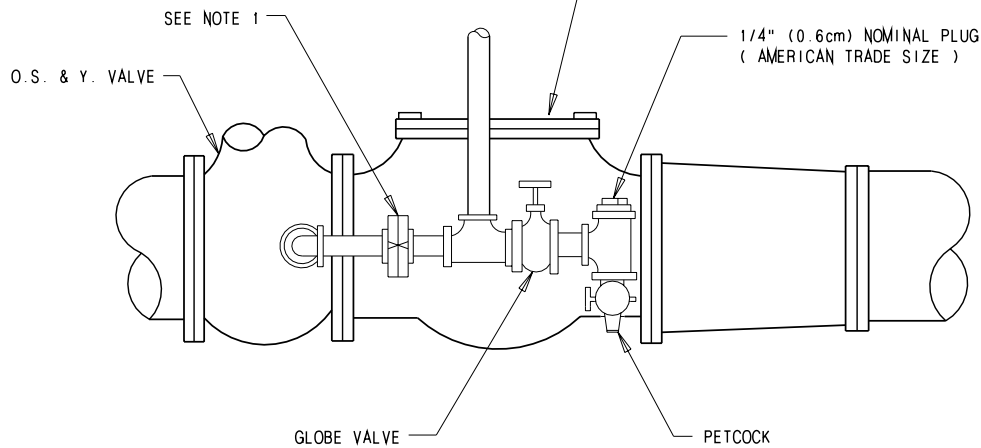
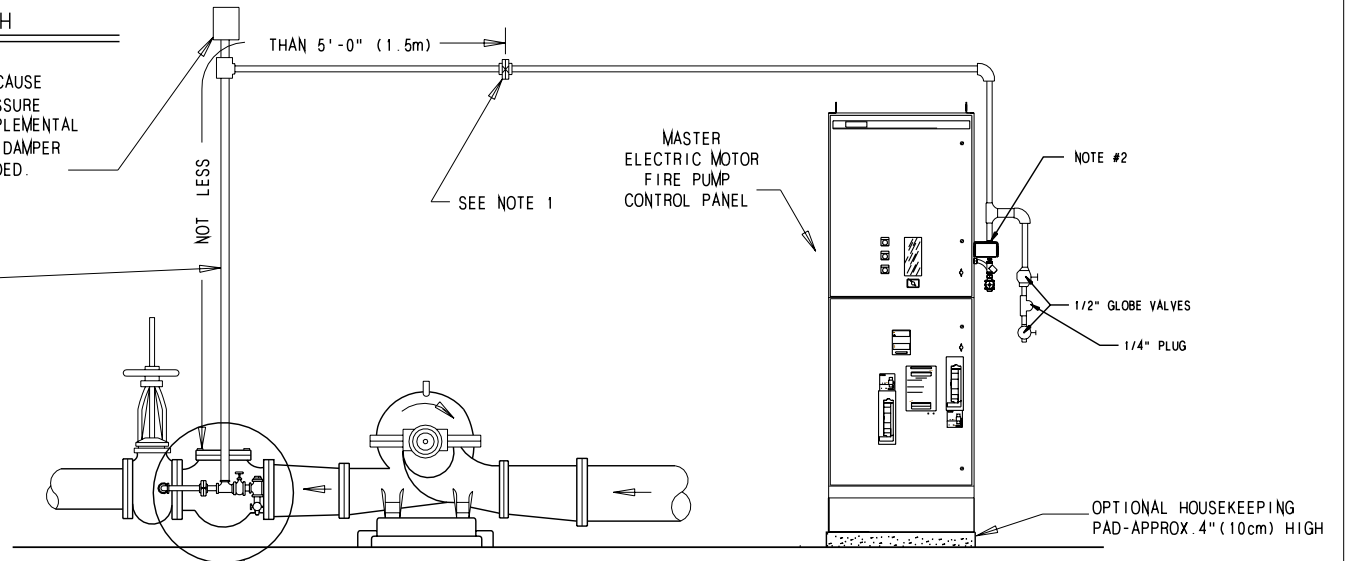
Piping Connections for Medium Voltage Fire Pump Controllers

MASTER

(PER NFPA 20 FIG. A-75.2.1)
 PIPING CONNECTION FOR
 AUTOMATIC PRESSURE SWITCH

WHERE WATER PULSATIONS CAUSE
 ERRATIC OPERATION OF PRESSURE
 SWITCH OR RECORDER A SUPPLEMENTAL
 AIR CHAMBER OR PULSATION DAMPER
 (ACCUMULATOR) MAY BE NEEDED.

NOT LESS THAN 1/2" (1.3cm) NOM.
 (AMERICAN TRADE SIZE) BRASS
 PIPE WITH BRASS FITTINGS
 OR EQUIVALENT.



NOTE

1. BRONZE CHECK VALVES. CLAPPER DRILLED WITH 3/32" (.24 mm) HOLE. EXCEPT WHERE WATER IS CLEAN GROUND FACE UNIONS WITH NON-CORROSIVE DIAPHRAM & 3/32" (.24 mm) ORIFICE MAY BE USED.
2. 1/2" (1.3cm) NOMINAL AMERICAN STANDARD TAPER FEMALE PIPE THREAD INLET & OUTLET.

REF: 4879



Master Control Systems Inc.
 LAKE BLUFF, ILLINOIS U.S.A.

PIPING CONNECTION FOR CONTROL WITH INTEGRAL
 PRESSURE SWITCH (PER NFPA 20 FIG. A-7-5.2.1)

Date 18 MAY 2012

Drawing 13622

Issue 2