

# EC Single Source Fire Pump Controller

**MASTER**

MODEL	SHORT CIRCUIT CURRENT RATING	MAXIMUM HORSEPOWER				
		200/208	220-240	380/415	440-480	550-600
ECA	100,000A	40	50*	75/100	100	125
ECP		60	75	125/150	150	150
ECO	100,000A	60	75	150	150	150



\* MOD. 30, SINGLE PHASE 15HP

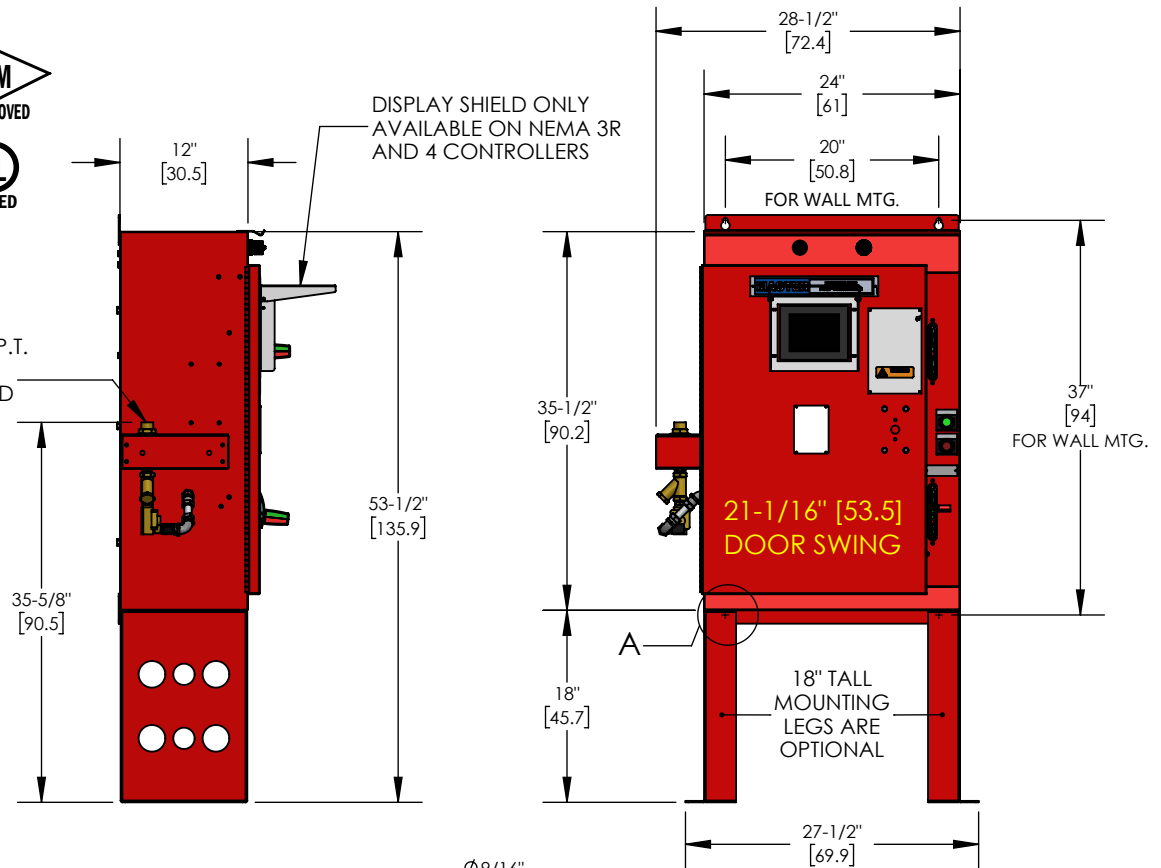
**NOTES:**

- CONSTRUCTION:** NEMA TYPE 12, 3R, AND 4
- FINISH:** FIRE PUMP RED
- CONDUIT ENTRANCE:** CONDUIT ENTRY ON TOP OR BOTTOM PROTECT EQUIPMENT FROM DRILLING CHIPS
- CONDUIT HUBS:** WATERPROOF HUBS REQUIRED FOR TOP ENTRY ACCESS: FRONT
- MOUNTING:** WALL MOUNT OR FLOOR MOUNT WITH OPTIONAL LEGS
- SHIPPING WEIGHT:** 220 LBS. (99.8 KG) MAX.

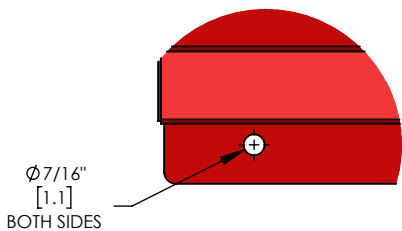
DIMENSIONS IN INCHES AND [CENTIMETERS]

1/2" (13mm) FEMALE N.P.T. NOMINAL (TRADE SIZE) AMERICAN STD. TAPERED PIPE THREAD

DISPLAY SHIELD ONLY AVAILABLE ON NEMA 3R AND 4 CONTROLLERS



**DETAIL A SCALE 1 : 4**



DETAIL SHOWS HOLE FOR WALL MOUNTING IF OPTIONAL LEGS ARE NOT USED. TYP. BOTH SIDES

