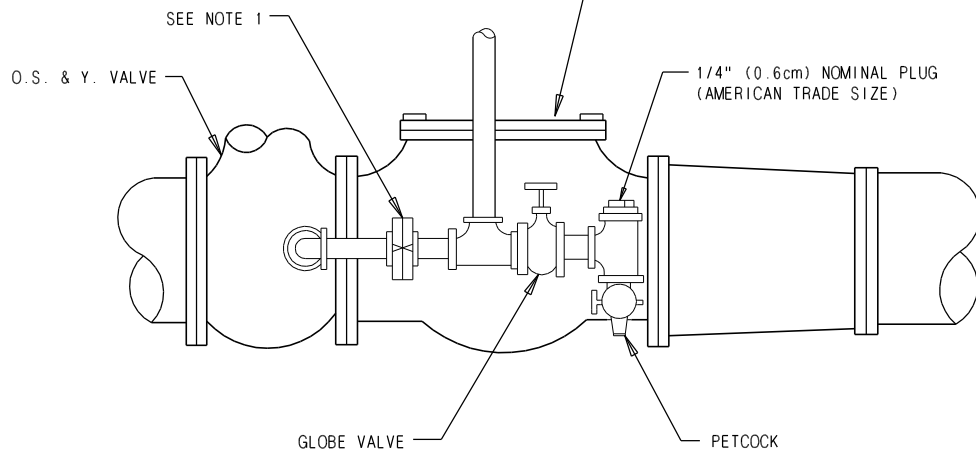
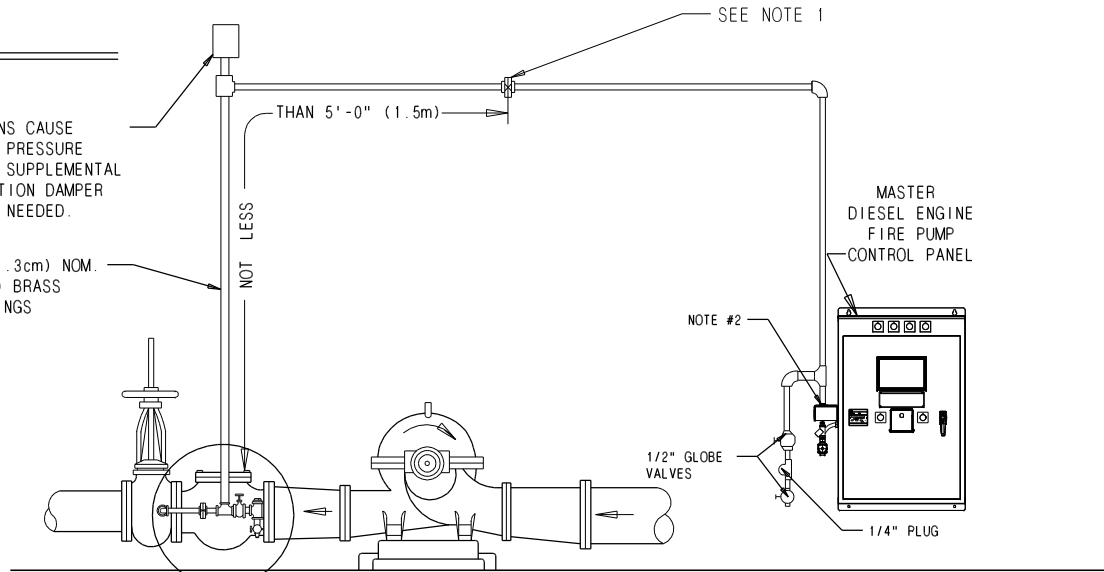


PIPING CONNECTION FOR PRESSURE SENSING LINE

(PER NFPA 20 FIG. A-12-5.2.1.1A)

WHERE WATER PULSATIONS CAUSE ERRATIC OPERATION OF PRESSURE SWITCH OR RECORDER A SUPPLEMENTAL AIR CHAMBER OR PULSATION DAMPER (ACCUMULATOR) MAY BE NEEDED.

NOT LESS THAN 1/2" (1.3cm) NOM. (AMERICAN TRADE SIZE) BRASS PIPE WITH BRASS FITTINGS OR EQUIVALENT.



NOTE

1. BRONZE CHECK VALVES. CLAPPER DRILLED WITH 3/32" (.24 mm) HOLE. EXCEPT WHERE WATER IS CLEAN GROUND FACE UNIONS WITH NON-CORROSIVE DIAPHRAM & 3/32" (.24 mm) ORIFICE MAY BE USED.
2. 1/2" (1.3cm) NOMINAL AMERICAN STANDARD TAPER FEMALE PIPE THREAD INLET & OUTLET.
3. ADDITIONAL PLUMBING REQUIRED IF MOD. 83LT PROVIDED

