

DEC Diesel Fire Pump Controller

MASTER

NOTE 1) BEFORE WIRING, VERIFY IF TERMINAL 12 IS USED FOR ENERGIZE TO STOP (BATTERY OUTPUT) OR AIR DAMPER (CONTACTS TO GROUND). FOR ENERGIZE TO STOP, USE TERMINAL 12. FOR AIR DAMPER USE TERMINAL 12A.

NOTE 2) SHUTDOWN TERMINALS 56 & 57 USE N.O. CONTACTS. ON LSSC CONTROLLERS, SWAP TERMINALS BETWEEN 10 & 11 (N.C. CONTACTS) TO TERMINALS 9 & 10 (N.O. CONTACTS).

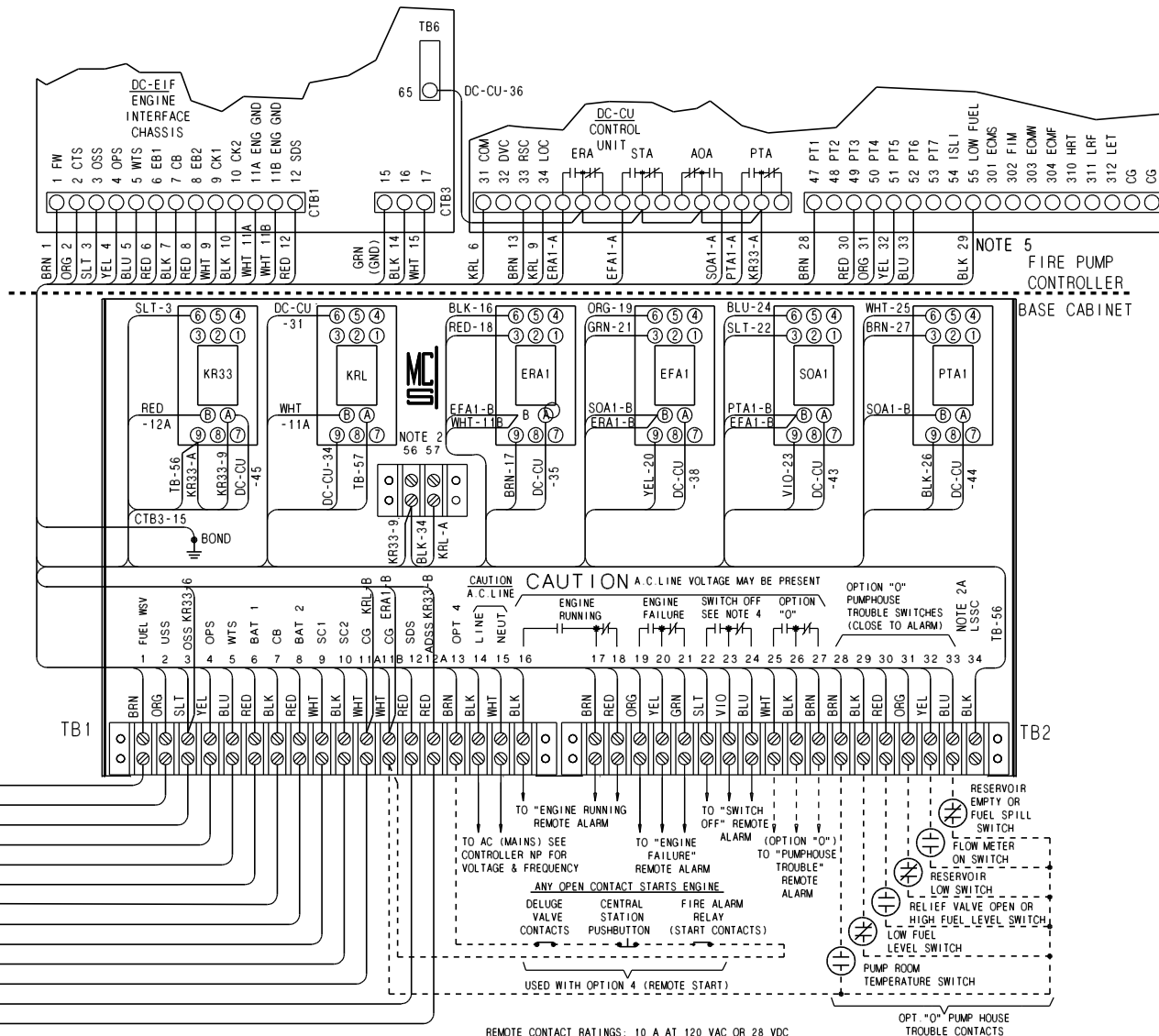
NOTE 2A) FOR USE WITH LSSC CONTROLLERS, DISCONNECT WIRE ON TERMINAL 33 (DMC CONTROLLERS HAVE LOCKOUT LED). PROVIDES CONSTANT BEST BATTERY.

NOTE 3) FOR G.M. "V8" ENGINES SERIES 7084-7010 AND 7083-7005. ALSO FOR G.M. "INLINE" ENGINES SERIES 1034-7110, 1044-7110 AND 1064-7110.

NOTE 4) SWITCH OFF ALARM CONTACTS ARE SHOWN IN NORMAL ENERGIZED STATE NON-ALARM

NOTE 5) CONTROLLERS SHIPPED PRIOR TO 11/5/2014 HAD LOW FUEL WIRED TO PT2(48)

- TO WATER AND/OR FUEL SOLENOID VALVE (Battery Output)
- TO UNDERSPEED OR CRANK TERMINATE SWITCH (Closes to battery)
- TO OVERSPEED SWITCH (Closes to battery)
- TO OIL PRESSURE SWITCH (Closes to ground)
- TO WATER TEMPERATURE SWITCH (Closes to ground)
- TO BATTERY NUMBER 1 POSITIVE
- TO CONTROL BATTERY POSITIVE
- TO BATTERY NUMBER 2 POSITIVE
- TO START CONTACTOR COIL NUMBER 1 (Battery Output)
- TO START CONTACTOR COIL NUMBER 2 (Battery Output)
- TO ENGINE GROUND (NEGATIVE BATTERY)
- TO ENERGIZE TO STOP SOLENOID ENGINES (CAUTION-SEE NOTE 1) (Battery Output)
- TO AIR DAMPER SWITCH ON G.M. ENGINES ON NOTE 3 (CAUTION-SEE NOTE 1) (Closes to ground)



THIS CONTROL NEGATIVE GROUND



Master Control Systems Inc.
LAKE BLUFF, ILLINOIS U.S.A.

Wiring Diagram for DEC Controller w/Base Cabinet - G4

Date 4 October 2018

Drawing 22610 Issue 7