

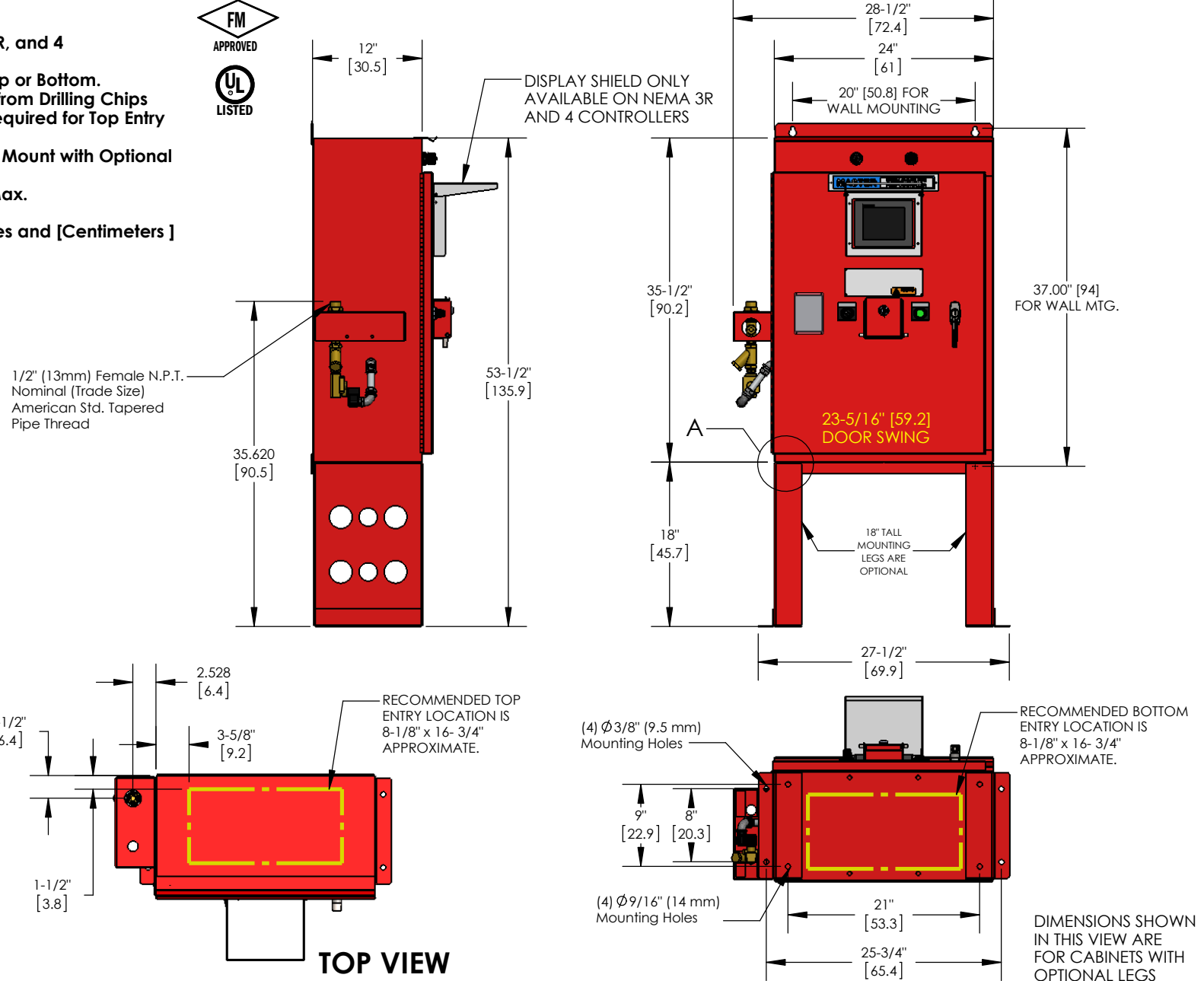
DEC Fire Pump Controller

MASTER

Notes:

- Construction:** NEMA Type 2, 12, 3R, and 4
- Finish:** Fire Pump Red
- Conduit Entrance:** Conduit Entry on Top or Bottom. Protect Equipment from Drilling Chips
- Conduit Hubs:** Waterproof Hubs Required for Top Entry
- Access:** Front
- Mounting:** Wall Mount or Floor Mount with Optional Legs
- Shipping Weight:** 190 Lbs. (86.2 kg) Max.

Dimensions In Inches and [Centimeters]



Ø .437 [1.1] TYP BOTH SIDES

DETAIL SHOWS HOLE FOR WALL MOUNTING IF OPTIONAL LEGS ARE NOT USED. TYP. BOTH SIDES