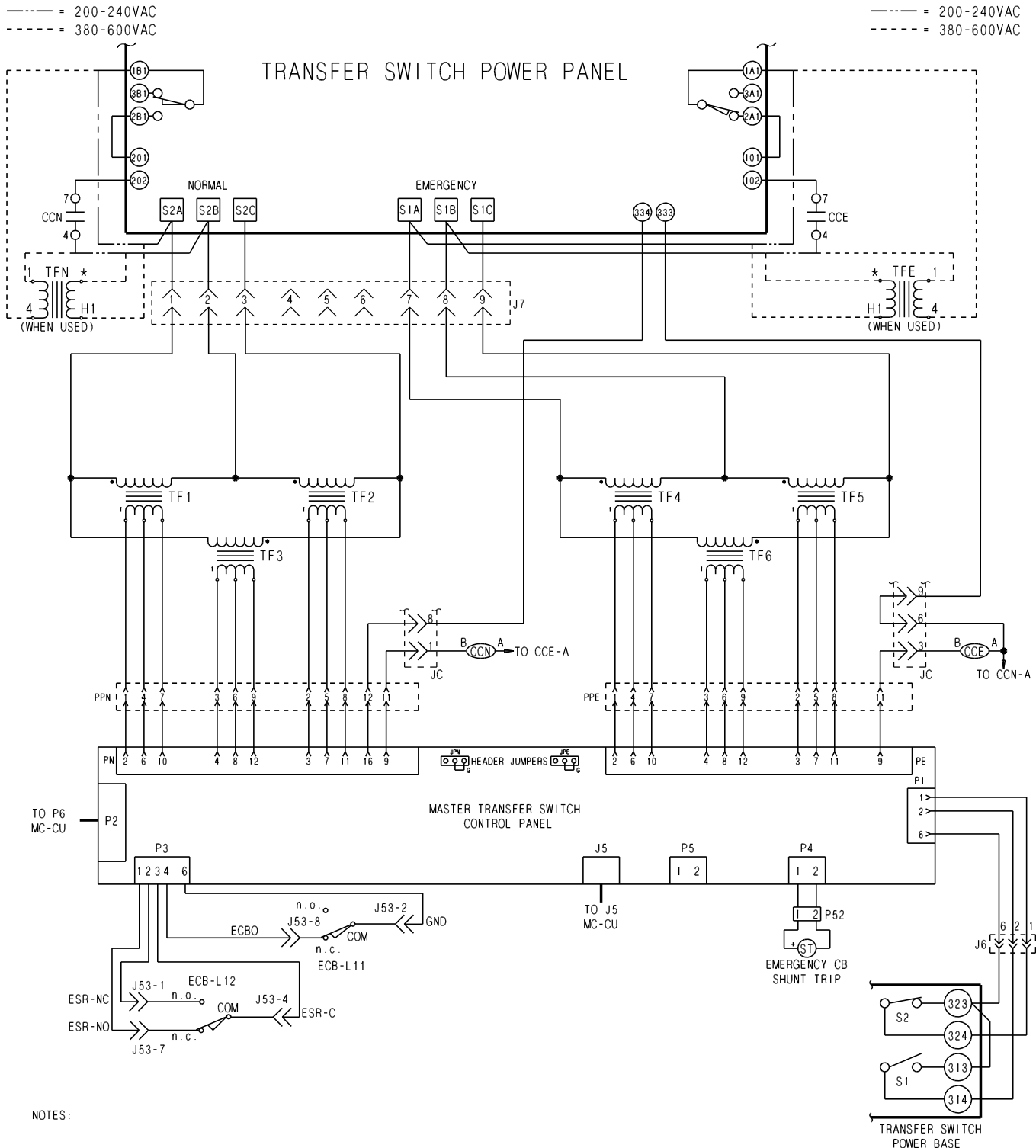


EC*TS Transfer Switch Control Circuit

MASTER



NOTES:

TRANSFER SWITCH SHOWN IN NORMAL POSITION

LIMIT SWITCHES S1 & S2 ARE ALL LOCATED ON THE TRANSFER SWITCH POWER PANEL

➤ J6, J7 & J5 Xfersw pin #'s

* WIRE TRANSFORMER PRIMARIES PER SYSTEM VOLTAGE