

# PIPING CONNECTIONS FOR ELECTRIC FIRE PUMP CONTROLLERS

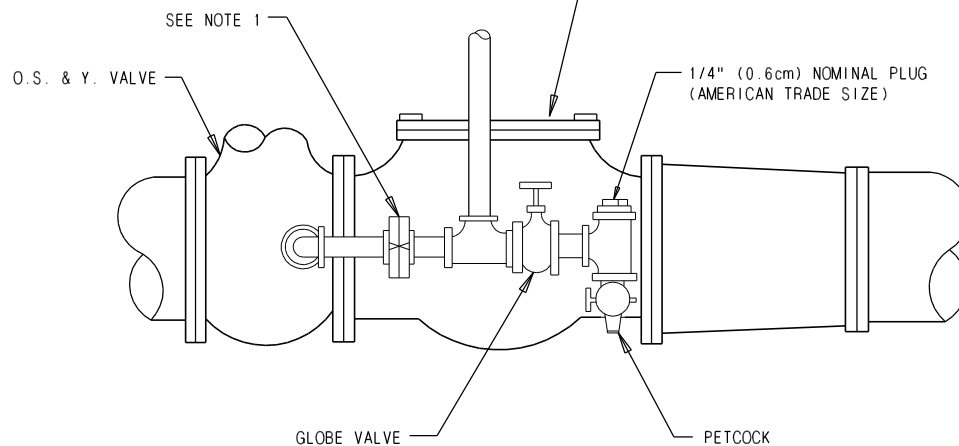
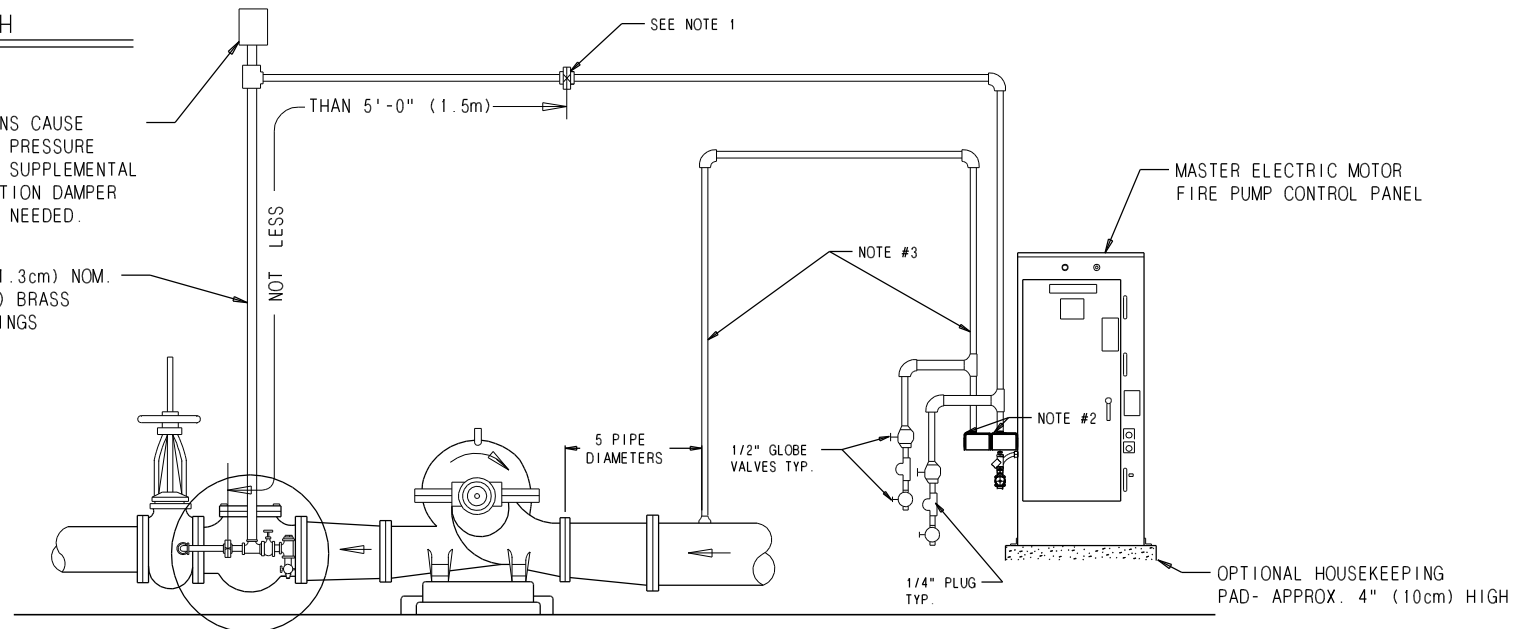
**MASTER**

## PIPING CONNECTION FOR AUTOMATIC PRESSURE SWITCH

( PER NFPA 20 FIG. A.4.32(a) )

WHERE WATER PULSATIONS CAUSE ERRATIC OPERATION OF PRESSURE SWITCH OR RECORDER A SUPPLEMENTAL AIR CHAMBER OR PULSATION DAMPER (ACCUMULATOR) MAY BE NEEDED.

NOT LESS THAN 1/2" (1.3cm) NOM. (AMERICAN TRADE SIZE) BRASS PIPE WITH BRASS FITTINGS OR EQUIVALENT.



### NOTE

1. BRONZE CHECK VALVES, CLAPPER DRILLED WITH 3/32" (.24 mm) HOLE. EXCEPT WHERE WATER IS CLEAN GROUND FACE UNIONS WITH NON-CORROSIVE DIAPHRAM & 3/32" (.24 mm) ORIFICE MAY BE USED.
2. 1/2" (1.3cm) NOMINAL AMERICAN STANDARD TAPER FEMALE PIPE THREAD INLET & OUTLET.
3. ADDITIONAL PLUMBING REQUIRED IF MOD. 83LT PROVIDED



**Master Control Systems Inc.**  
LAKE BLUFF, ILLINOIS U.S.A.

Piping Connections for Electric Controllers w/ 83LT

Date 10 September 2021

Drawing 21400

Issue 4